

Approach Document and Usage Guide
Oracle FLEXCUBE Universal Banking
Release 12.3.0.0.0
[December] [2016]



Table of Contents

1. INTRODUCTION	1-1
1.1 NEED FOR UDDI REGISTRY	1-2
1.2 APPLICATION OF A UDDI REGISTRY	1-2
1.2.1 <i>Benefits of UDDI</i>	1-3
2. DOCUMENT OVERVIEW	2-1
3. REQUIREMENTS	3-1
4. PREREQUISITES	4-1
4.1 HARDWARE / SOFTWARE REQUIRED.....	4-1
5. SYSTEM DESCRIPTION	5-1
5.1 ABOUT ORACLE SERVICE REGISTRY	5-1
5.2 DESIGN ARCHITECTURE	5-2
6. INSTALLATION	6-1
6.1 ORACLE SERVICE REGISTRY SETUP.....	6-1
6.1.1 <i>Introduction</i>	6-1
6.1.2 <i>Installing Oracle Service Registry</i>	6-1
7. CONFIGURATION AND DEPLOYMENT	7-1
7.1 SYSTEM CONFIGURATIONS	7-1
7.1.1 <i>Adding New Business / Provider</i>	7-1
7.2 TAXONOMY CREATION.....	7-3
7.3 PUBLISHING AND DISCOVERY OF SERVICES.....	7-9
7.3.1 <i>Publish WSDL</i>	7-9
7.3.2 <i>Associate Classification</i>	7-12
7.3.3 <i>Discovering Services</i>	7-15
8. REFERENCE	8-1

1. Introduction

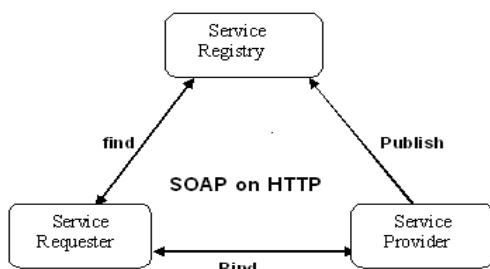
A Web service is a software system designed to support interoperable machine-to-machine interaction over a network. It has an interface described in a machine-readable format (specifically WSDL). Other systems interact with the Web service in a manner prescribed by its description using SOAP messages, typically conveyed using HTTP with an XML serialization in conjunction with other Web-related standards.

UDDI is a flexible yet structured solution that provides a foundational description and discovery infrastructure for Web services.

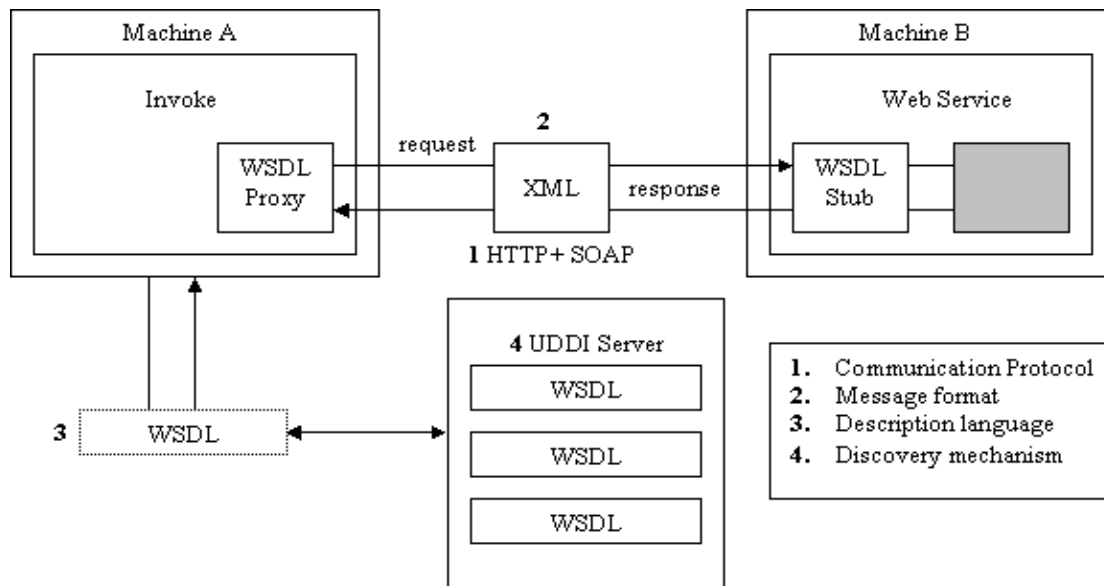
- UDDI Services maximize the visibility of existing code and applications; it helps to realize the vision of reusing code and development resources. UDDI Services provide a powerful tool that can help manage Web services across an organization.

The Oracle Service Registry provides a UDDI v3-compliant platform for publishing, categorizing and discovering Web services and related resources across the enterprise.

Oracle Service Registry is the key component of Service Oriented Architecture, It enables service providers to expose and advertise service offerings and allows service consumers to find access and/or invoke services that meet defined criteria.



Web services an Example:



1.1 Need for UDDI Registry

UDDI Registry is necessary to publish the Web services on to the Application Server.

- The UDDI registry can help to address these issues and provides the following benefits:
- It delivers visibility when identifying which services within the organization can be reused to address a business need. It promotes reuse and prevents reinvention. It accelerates development time and improves productivity. This ability of UDDI to categorize a growing portfolio of services makes it easier to manage them. It helps you understand relationships between components, supports versioning and manages dependencies.
- It supports service configurability and adaptability by using the service-oriented architectural principle of location and transport independence. Users can dynamically discover services stored in the UDDI registry.
- It allows you to understand and manage relationships between services, component versions and dependencies.
- It makes it possible to manage the business service lifecycle. For example, the process of moving services through each phase of development, from coding to public deployment.

1.2 Application of a UDDI Registry

A UDDI registry stores data and metadata about business services. A UDDI registry offers a standards-based mechanism to classify, catalog and manage Web services so that they can be discovered and consumed by other applications. As part of a generalized strategy of indirection among services-based applications, UDDI offers several benefits to IT managers at both design-time and run-time, including increasing code reuse and improving infrastructure management by:

- Publishing information about Web services and categorization rules (taxonomies) specific to an organization.
- Finding Web services that meet given criteria.

- Determining the security and transport protocols supported by a given Web service and the parameters necessary to invoke the service.
- Providing a means to insulate applications (and providing fail-over and intelligent routing) from failures or changes in invoked services

1.2.1 **Benefits of UDDI**

- Allows category-related support allows the consumers makes easier and faster to locate a target web service.
- Publisher assigned keys - This is very important for lifecycle maintenance of a Web service. For example, it enables the same key to be used in a development registry, a test registry and a production registry.
- Category Bags & Binding Templates - This is valuable as it can allow searching of Web services based on the technical details of how it is exposed (e.g. restricting Web services to those exposed via WS-Reliable Messaging).
- Category groups and derivations of categories - This enables more structured and rich descriptions of services.
- Wildcard searching against entities and taxonomies - This indeed provides huge value for enterprises managing large amount of services.

2. Document Overview

The document describes the following

- Installation of Oracle Service Registry
- Creation of User Accounts
- Adding New Business / Provider
- Taxonomy Creation
- Publishing Web services
- Associating Classification to Web services
- Discovering Web services based on the categorization

3. Requirements

Publishing of FCUBS Gateway Web services on to Oracle Service Registry.

4. Prerequisites

4.1 Hardware / Software Required

- Oracle Service Registry 11.1.1.5 - <http://www.oracle.com/technetwork/middleware/registry/osr111productdocumentation-159992.pdf>



The underlying hardware and software requirements of Oracle Service Registry can be found at the above mentioned URL.

5. System Description

5.1 About Oracle Service Registry

Oracle Service Registry is the only fully V3-compliant implementation of UDDI (Universal Description, Discovery and Integration), and is a key component of a Service Oriented Architecture (SOA). Oracle Service Registry is an easy-to-use, standards-based mechanism for publishing and discovering Web services and related resources like XML Schemas or XSLT transformations.

Oracle Service Registry fully implements the OASIS UDDI V3 standard. Oracle Service Registry can be deployed in almost any Java environment and works with all popular database systems. In addition, the registry has been designed specifically for enterprise deployment and includes many advanced features that make it easy to configure, deploy, manage and secure.

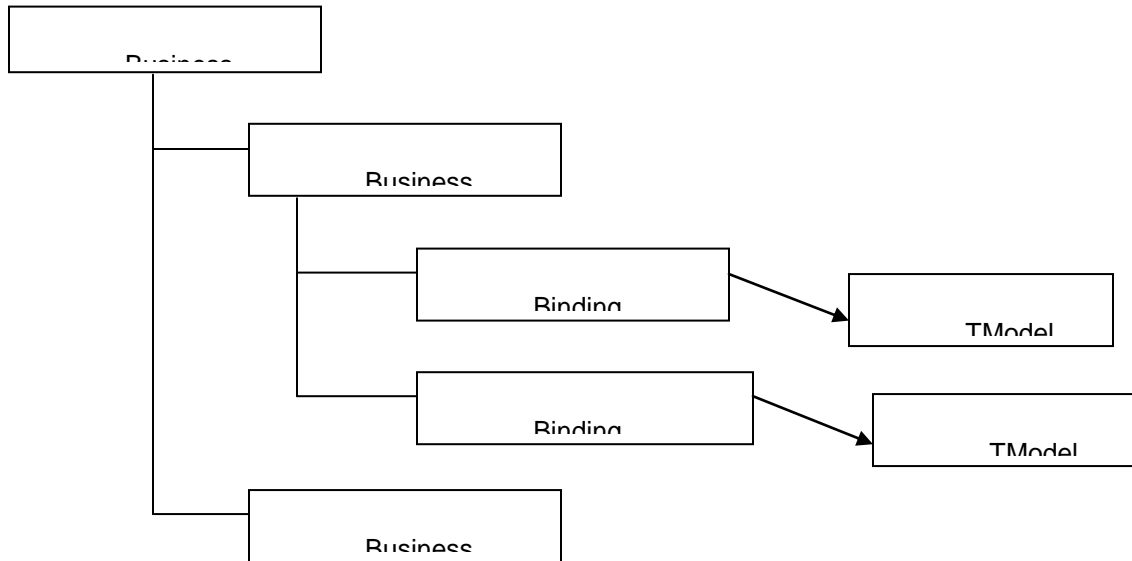
Oracle Service Registry is a platform-independent solution that can easily be deployed in a wide variety of settings. Oracle Service Registry (OSR) provides the following capabilities.

- OSR allows creating the account for user who wants to access the oracle registry.
- OSR allows publishing web services, by uploading WSDL (one at a time).
- OSR allows creating the Taxonomy Structure (defines the classification to be used while classifying the services published).
- OSR allows associating the classification created (using the previous step) to the services published into the Oracle Service Registry.

Using JAXR, some of the OSR capabilities can be performed such as

- Publishing Web services by uploading the WSDL.
- Classification of Web services published based on the categorization.

5.2 Design Architecture



- Business Entity: A top-level data structure that holds descriptive information about a business, Service descriptions and technical information are expressed within a business Entity.
- Business Service: The Business Service represents a logical service and contains descriptive information in business terms. A Business Service is the logical child of a single Business Entity.
- Binding Template: The Binding Templates structure for a given Business Service holds the technical descriptions of the Web services that constitute the Business Service.
- tModel: One common use for tModel entities is to represent technical specifications or concepts. For example, a tModel can be used to represent a specification that defines wire protocols, interchange formats and interchange sequencing rules.

The creation of user account is the first step that has to be performed after Installing the Oracle Service Registry. When creating users through Account management in OSR Tool, you'll be asked to enter values for the items discussed above. A snapshot of values for the above items is shown below

Assertions limit:	<input type="text" value="10"/>
Bindings limit:	<input type="text" value="2"/>
Businesses limit:	<input type="text" value="1"/>
Services limit:	<input type="text" value="4"/>
Subscriptions limit:	<input type="text" value="5"/>
TModels limit:	<input type="text" value="100"/>

Business limit is the number of Business that you can maintain. Services limit is the number of services that a Business can have and Bindings limit is the number of bindings that can be attached to each Service that has been published. The values to these details are defaulted by Oracle Service Registry as shown below; you can change these values accordingly.

6. Installation

6.1 Oracle Service Registry Setup

6.1.1 Introduction

Installing the oracle service registry involves creating a database and creating a schema for UDDI registry and deploying the service registry into the specified oracle application server.

6.1.2 Installing Oracle Service Registry

Oracle Service Registry can be downloaded from:

<http://www.oracle.com/technetwork/middleware/registry/downloads/index.html>

The document for installing the oracle service registry (Registry.pdf) can be downloaded from the link above.

Additional detail to be noted while Installing Oracle Service Registry

- During Installation the Service Registry Installer will ask for details to create the Administrator account, kindly make a note of the details that you enter.
- Make sure all jar files are included while submitting JDBC Drivers Path.

7. Configuration and Deployment

7.1 System Configurations

7.1.1 Adding New Business / Provider

Before starting with Adding New Business / Provider the following item must be done.

1. User must be created and sufficient rights must be given to the user.
2. In order to Add New Business the user has to login into the Publish space from the home page as shown below i.e. Home > Publish as shown below.

Oracle Service Registry 11.1.1

Registry Step By Step Guide
About Oracle Registry

Oracle Service Registry is the most complete and proven business services registry providing a foundation for the governance and lifecycle management of your business services. The Registry provides you with what you need to obtain enterprise-wide insight, control and economic leverage of your organization's business services assets. Much more than just a UDDI registry, the Registry captures and makes discoverable business service descriptions into a centrally managed, reliable and searchable location, becoming the system of record for your business services. Oracle Service Registry provides two user interfaces.

Registry Control

Using the **Registry Control** users can browse and publish registry content, create subscriptions and perform ownership changes. The Registry Control is the primary console for administrators to perform registry management.

Getting Started with the Registry Control

Browse - [Browse](#) registry content using enterprise taxonomies

Search - [Search](#) registry content including services, service providers, service endpoints and interfaces, and business service artifacts

[Business](#) [Services](#) [Bindings](#)
[tModels](#) [Direct get](#) [WSDL](#)
[XML](#) [XSD](#) [XSLT](#)

Publish - By logging in you can [publish](#) registry content including services, service providers, service endpoints and interfaces. You can also subscribe to receive notifications of registry changes and transfer ownership of your entities to other users.

[Publish](#) [Subscriptions](#) [Custody transfer](#)
[WSDL](#) [XML](#) [XSD](#)
[XSLT](#)

Profile - By logging in you can manage your user account [profile](#) including properties, groups, and your favorite taxonomies.

[My account](#) [Groups](#) [Favorite taxonomies](#)

Manage - By logging in [administrators](#) can perform various management tasks

[Registry management](#)
[Registry configuration](#)
[Registry control configuration](#)

Refer to the [Oracle Service Registry User's Guide](#) and [Registry Control Reference](#) for more information.

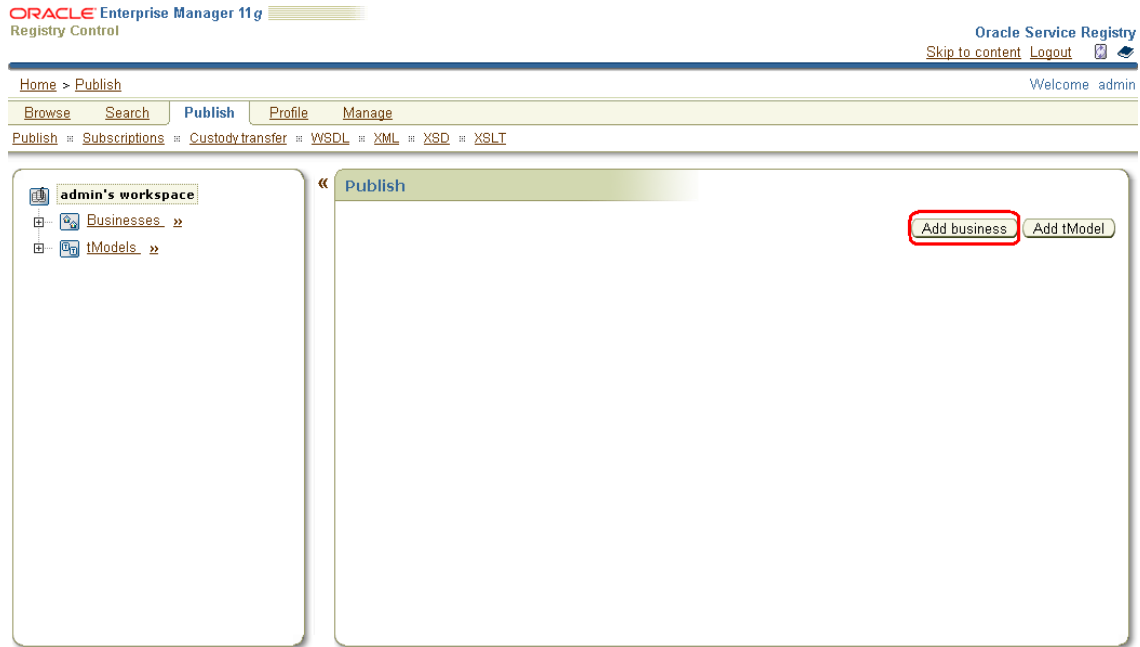
3. On click of Publish, the following screen will be displayed where the user has to submit credentials i.e. username & password (username & password that was submitted during OSR Installation).

Login

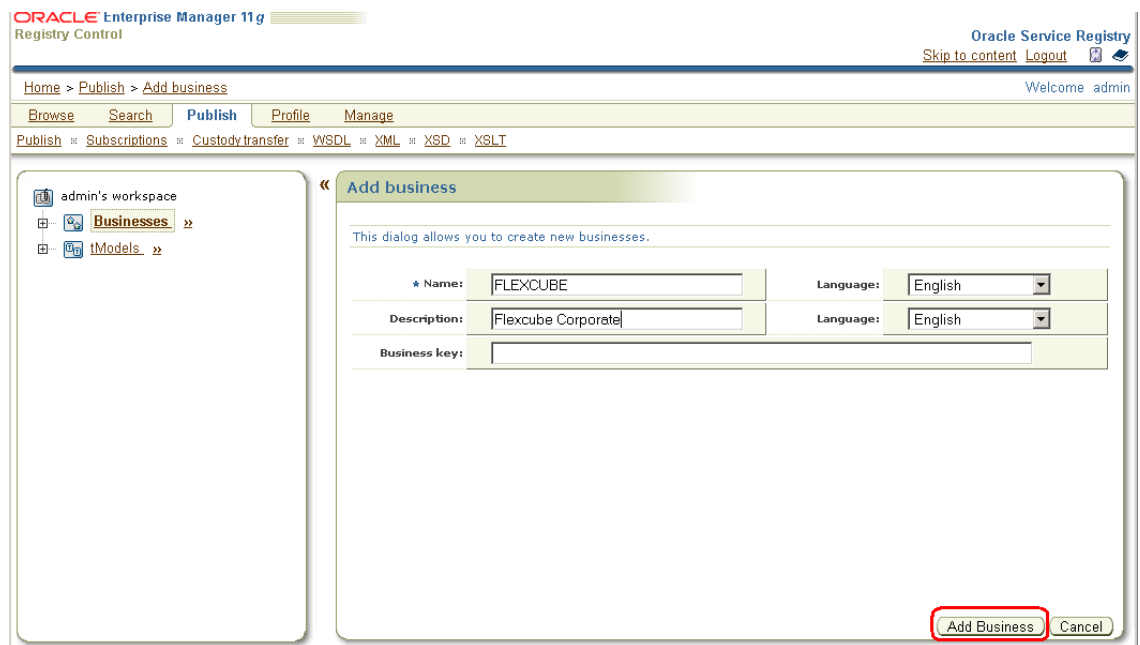
User name:

Password:

4. On successful submission of credentials, the following page will be displayed.



- On click of Add Business button, the following screen will be displayed where in you'll be asked to enter details for adding a new Business as shown below.



- After entering the necessary details, click Add Business button as shown above.
- If the above business has been created successfully you'll be able to view the same on the left pane i.e. admin workspace as shown below.

ORACLE Enterprise Manager 11g Registry Control

Oracle Service Registry
Skip to content Logout

Home > Publish > Edit business Welcome admin

Browse Search Publish Profile Manage

Publish :: Subscriptions :: Custody transfer :: WSDL :: XML :: XSD :: XSLT

admin's workspace

- Businesses »
 - FLEXCUBE »
 - Oracle Service Registry »
- tModels »

« Edit business 'FLEXCUBE' »

Details

Business Key		uddi:755d2390-8494-11e1-9c16-423c3c719c15	
Name	FLEXCUBE	Language	English
		Add name	
Description	Flexcube Corporate	Language	English
		Add description	

Operational Info

Authorized name	admin
Node ID	Oracle
UDDI v2 key	755d2390-8494-11e1-9c16-423c3c719c15
Created	Apr 12, 2012 5:11:35 PM
Last modified	Apr 12, 2012 5:11:35 PM
Last modified (incl. children)	Apr 12, 2012 5:11:35 PM

Not signed

Publish WSDL Save changes

This completes the step of Adding New Business / Provider.

7.2 Taxonomy Creation

Taxonomy creation is functionality that will be used to create the user defined classification structure. Once the taxonomy is created, services will be classified in any one of the classification, this facilitates easy way of searching the services published into Oracle Service Registry.

In order to create a taxonomy you'll have to login into Registry Management from the home page as shown below i.e. Home > Registry Management.

Oracle Service Registry

[Registry Step By Step Guide](#)
[About Oracle Registry](#)

Oracle Service Registry 11.1.1

Oracle Service Registry is the most complete and proven business services registry providing a foundation for the governance and lifecycle management of your business services. The Registry provides you with what you need to obtain enterprise-wide insight, control and economic leverage of your organization's business services assets. Much more than just a UDDI registry, the Registry captures and makes discoverable business service descriptions into a centrally managed, reliable and searchable location, becoming the system of record for your business services. Oracle Service Registry provides two user interfaces.

Registry Control

Using the **Registry Control** users can browse and publish registry content, create subscriptions and perform ownership changes. The Registry Control is the primary console for administrators to perform registry management.

Getting Started with the Registry Control

Browse - [Browse](#) registry content using enterprise taxonomies

Search - [Search](#) registry content including services, service providers, service endpoints and interfaces, and business service artifacts

Business	Services	Bindings
tModels	Direct get	WSDL
XML	XSD	XSLT

Publish - By logging in you can [publish](#) registry content including services, service providers, service endpoints and interfaces. You can also subscribe to receive notifications of registry changes and transfer ownership of your entities to other users.

Publish	Subscriptions	Custody transfer
WSDL	XML	XSD
XSLT		

Profile - By logging in you can manage your user account [profile](#) including properties, groups, and your favorite taxonomies.

[My account](#) [Groups](#) [Favorite taxonomies](#)

Manage - [By logging in administrators](#) can perform various management tasks

[Registry management](#)

[Registry configuration](#)

[Registry control configuration](#)

Refer to the [Oracle Service Registry User's Guide](#) and [Registry Control Reference](#) for more information.

Business Service Control

Using the **Business Service Control** developers, architects and business users can browse the various perspectives of the Registry including business-relevant classifications such as service and interface lifecycle, compliance or operational/readiness status, and browsing information through business-relevant abstractions of SOA information such as schemas, interface local names or namespaces. The Business Service Control also provides easy to use and customizable publication wizards.

Connect to the [Business Service Control](#)

- On click of Registry Management, the following screen will be displayed where the user has to submit credentials i.e. username & password (username & password that was submitted during OSR Installation).

Login

User name:

Password:

- On successful login, you'll be routed to the screen below where you can find a button called Taxonomy Management as shown below.

Registry management

- Management of user accounts: Account management
- Management of user groups: Group management
- User and group permissions: Permissions
- Taxonomy management: Taxonomy management**
- Replication management: Replication management
- Replace UDDI keys in: tModel, business, service, binding
- Replace URLs: Replace URLs
- Delete deprecated tModels: Select tModels
- Transform keyed references: Transform
- Statistics: Statistics
- Management of configurations: Configuration management

10. On click of this button you'll be routed to the next page where you can find a button called Add Taxonomy at the bottom of the page as shown below.

Find taxonomy

Show: enterprise taxonomies

Displaying results 1 - 13 of 13

Name	Description	Checked	Edit	Delete	Edit Structure	Download
ntis.gov:naics:2002	Business Taxonomy: NAICS (2002 Release)	✓				
thomasregister.com:supplierID	Thomas Registry Suppliers	✗				
ubr-uddi-org:iso-ch:3166-2003	ISO 3166 Codes for names of countries and their subdivisions. Updated with newsletters ISO 3166-1 V-1, V-2, V-3, V-4, V-5, V-6, V-7.	✓				
uddi-org:general_keywords	Category system consisting of namespace identifiers and the keywords associated with the namespaces.	✓				
uddi-org:isReplacedBy	Identifier system used to point to the UDDI entity, using UDDI keys, that is the logical replacement for the one in which isReplacedBy is used.	✓				
uddi-org:resource.reference	A checked category system used to refer to the tModel of another resource.	✓				
uddi-org:resource.type	An checked category system used to indicate the type of resource	✓				
uddi-org:types	UDDI Type Category System	✓				
uddi-org:wsdl:categorization:protocol	Category system used to describe the protocol supported by a wsdl:binding	✓				
uddi-org:wsdl:categorization:transport	Category system used to describe the transport supported by a wsdl:binding.	✓				
uddi-org:wsdl:portTypeReference	TA category system used to reference a wsdl:portType tModel	✓				
uddi-org:wsdl:types	WSDL Type Category System	✓				
unspsc-org:unspsc:v6.0501	Product and Service Category System: United Nations Standard Products and Services Code (UNSPSC)	✓				

Enterprise Taxonomies Upload Taxonomy Status of Upload **Add Taxonomy**

11. On click of Add Taxonomy the next page appears where the user has to enter details for creating Taxonomy as shown below.

Add taxonomy

* Name:	<input type="text" value="FLEXCUBE"/>
tModel key:	<input type="text"/>
Description:	<input type="text"/>
* Categorization:	<input checked="" type="checkbox"/> categorization <input type="checkbox"/> categorizationGroup <input type="checkbox"/> identifier <input type="checkbox"/> relationship
Compatibility:	<input checked="" type="checkbox"/> bindingTemplate <input checked="" type="checkbox"/> businessEntity <input checked="" type="checkbox"/> businessService <input checked="" type="checkbox"/> tModel
Validation:	<input checked="" type="radio"/> checked internal
	<input type="radio"/> checked external Validation service endpoints: Version 3: <input type="text"/> Version 2: <input type="text"/> Version 1: <input type="text"/>
	<input type="radio"/> unchecked
	<input type="checkbox"/> unvalidatable:
System taxonomy:	<input checked="" type="checkbox"/>
Reference to:	<input type="checkbox"/> entityKey <input type="checkbox"/> businessKey <input type="checkbox"/> serviceKey <input type="checkbox"/> bindingKey <input type="checkbox"/> tModelKey <input type="checkbox"/> subscriptionKey
Value type:	<input checked="" type="radio"/> existing comparator <input type="text" value="systinet-com:comparator:string"/>
	<input type="radio"/> new comparator Comparator name: <input type="text"/> Transformer service endpoint: <input type="text"/>
Add to favorite:	<input checked="" type="checkbox"/>
Add to enterprise:	<input type="checkbox"/>

12. While submitting details please make sure,

- The checked internal radio button is selected for validation else you'll have to write your own validation service. It's better if you use the internal validation.
- Do not check any of the check boxes for "Reference to" detail.
- Check the Add to favorite check box because searching for the taxonomy will be easier.

13. Once details are entered click the Save taxonomy button as shown above. Once the Taxonomy is saved you can find the same as shown below. Choose show favorite taxonomies to view the created Taxonomy.

ORACLE Enterprise Manager 11g Registry Control

Oracle Service Registry
Skip to content Logout

Home > Registry management > Find taxonomy

Welcome admin

Browse Search Publish Profile Manage

Registry management Registry configuration Registry control configuration

Find taxonomy

Show: favorite taxonomies

Displaying results 1 - 1 of 1

Name	Description	Checked	Edit	Delete	Edit Structure	Download
FLEXCUBE		✓				

Enterprise Taxonomies Upload Taxonomy Status of Upload Add Taxonomy

14. In order to create a Taxonomy structure - Click on Edit Structure button as shown below.

ORACLE Enterprise Manager 11g Registry Control

Oracle Service Registry
Skip to content Logout

Home > Registry management > Find taxonomy

Welcome admin

Browse Search Publish Profile Manage

Registry management Registry configuration Registry control configuration

Find taxonomy

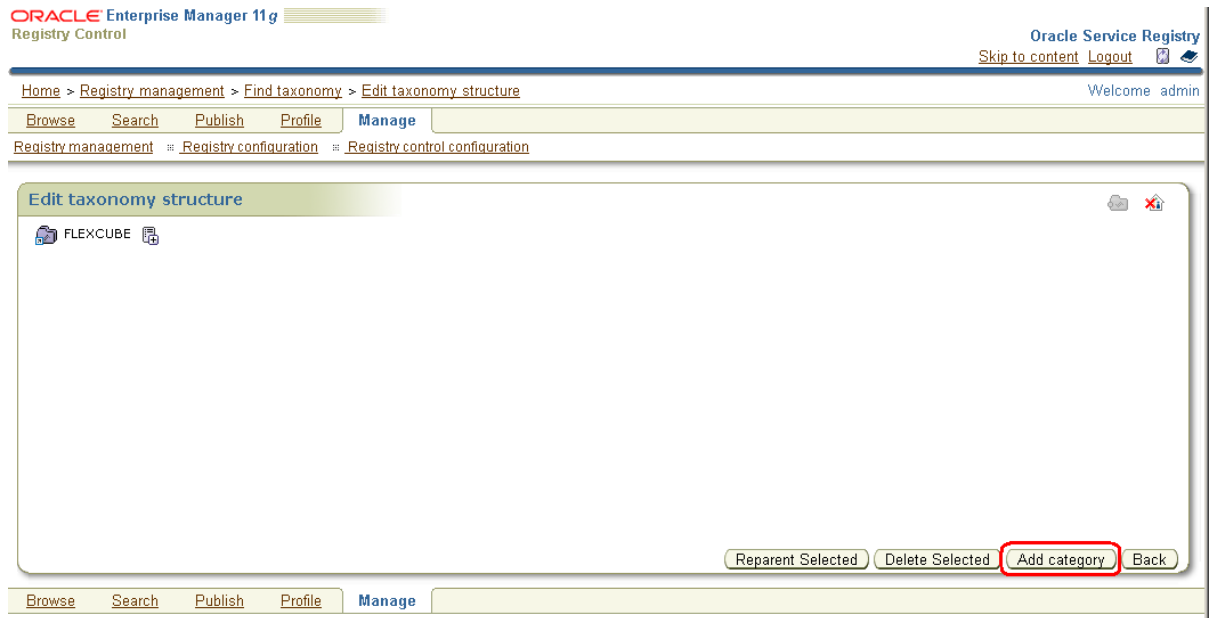
Show: favorite taxonomies

Displaying results 1 - 1 of 1

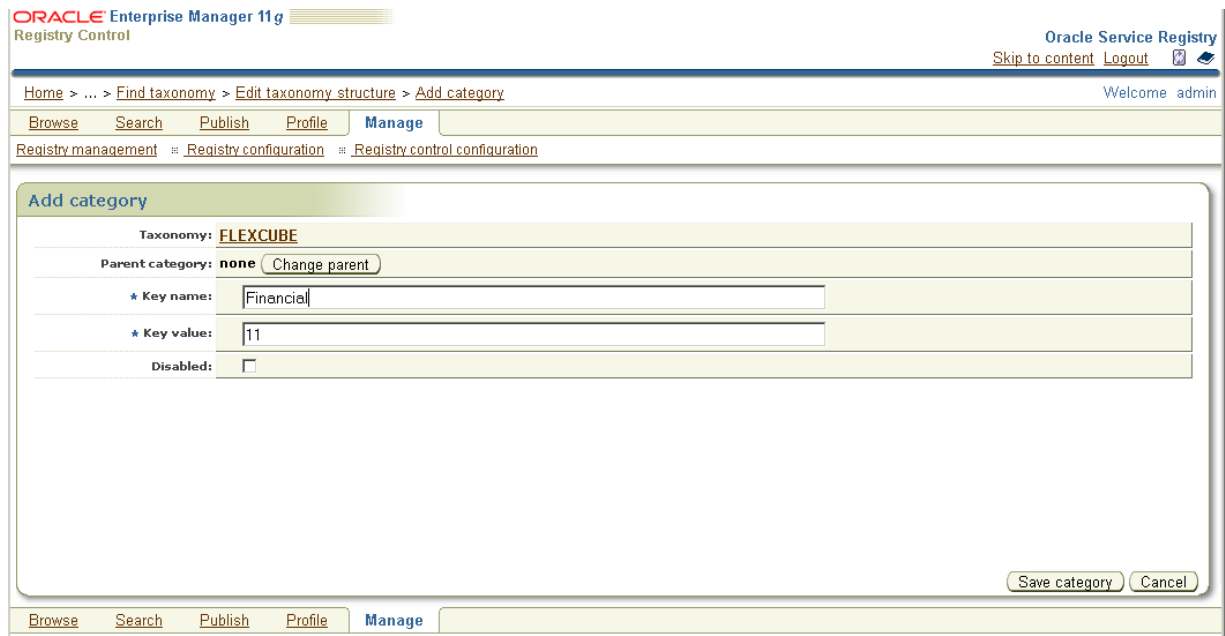
Name	Description	Checked	Edit	Delete	Edit Structure	Download
FLEXCUBE		✓				

Enterprise Taxonomies Upload Taxonomy Status of Upload Add Taxonomy

15. On click of the Edit Structure, the next page opens where there is a button Add category, using which you'll be able to create a Taxonomy Structure as shown below.

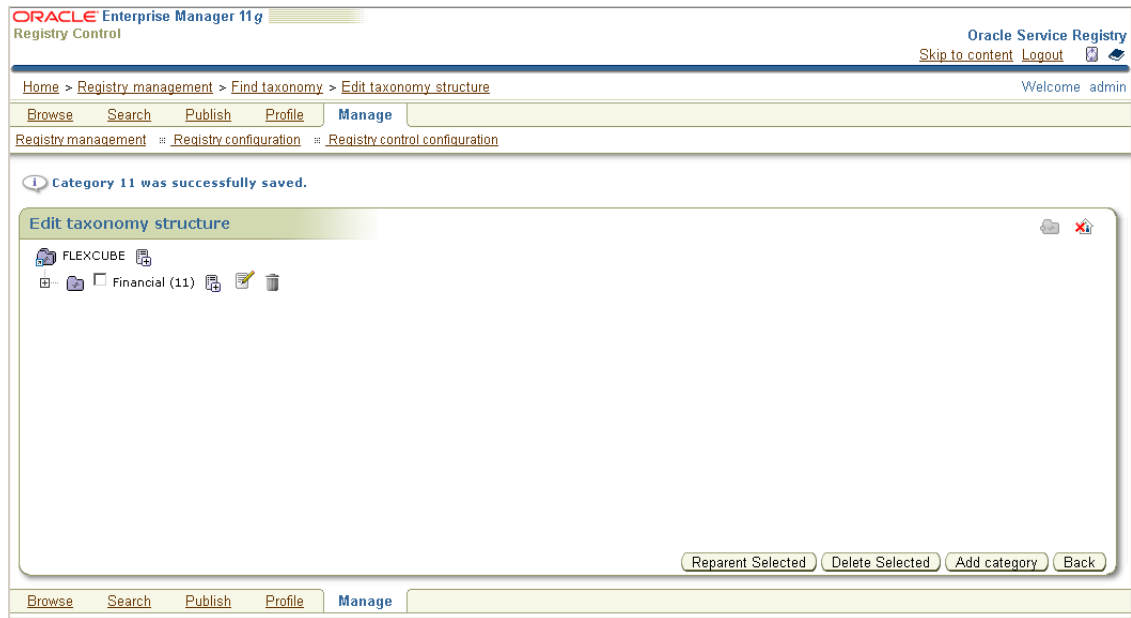


16. On click of the Add Category button the following screen is displayed where you'll have to enter details to create category as shown below.



17. While providing details to Add Category if you check the disabled check box, you cannot use this particular category for classification. Once the details are entered click Save category button as shown above.

A sample Taxonomy Structure is shown below.



7.3 Publishing and Discovery of Services

7.3.1 Publish WSDL

Before starting with publishing the WSDL's the following items must be done.

1. User must be created and sufficient rights must be given to the user.
2. Web services that have to be published should already be deployed into the Application Server.
3. In order to do Publish the WSDL the user has to login into the Publish space from the home page as shown below i.e. Home > Publish

Oracle Service Registry 11.1.1

Oracle Service Registry is the most complete and proven business services registry providing a foundation for the governance and lifecycle management of your business services. The Registry provides you with what you need to obtain enterprise-wide insight, control and economic leverage of your organization's business services assets. Much more than just a UDDI registry, the Registry captures and makes discoverable business service descriptions into a centrally managed, reliable and searchable location, becoming the system of record for your business services. Oracle Service Registry provides two user interfaces.

Registry Control

Using the **Registry Control** users can browse and publish registry content, create subscriptions and perform ownership changes. The Registry Control is the primary console for administrators to perform registry management.

Getting Started with the Registry Control

Browse - [Browse](#) registry content using enterprise taxonomies

Search - [Search](#) registry content including services, service providers, service endpoints and interfaces, and business service artifacts

Business	Services	Bindings
Models	Direct get	WSDL
XML	XSD	XSLT

Publish - By logging in you can [publish](#) registry content including services, service providers, service endpoints and interfaces. You can also subscribe to receive notifications of registry changes and transfer ownership of your entities to other users.

Publish	Subscriptions	Custody transfer
WSDL	XML	XSD
XSLT		

Profile - By logging in you can manage your user account [profile](#) including properties, groups, and your favorite taxonomies.

My account	Groups	Favorite taxonomies
----------------------------	------------------------	-------------------------------------

Manage - By logging in [administrators](#) can perform various management tasks

Registry management
Registry configuration
Registry control configuration

Refer to the [Oracle Service Registry User's Guide](#) and [Registry Control Reference](#) for more information.

Business Service Control

Using the **Business Service Control** developers, architects and business users can browse the various perspectives of the Registry including business-relevant classifications such as service and interface lifecycle, compliance or operational/readiness status, and browsing information through business-relevant abstractions of SOA information such as schemas, interface local names or namespaces. The Business Service Control also provides easy to use and customizable publication wizards.

Connect to the [Business Service Control](#)

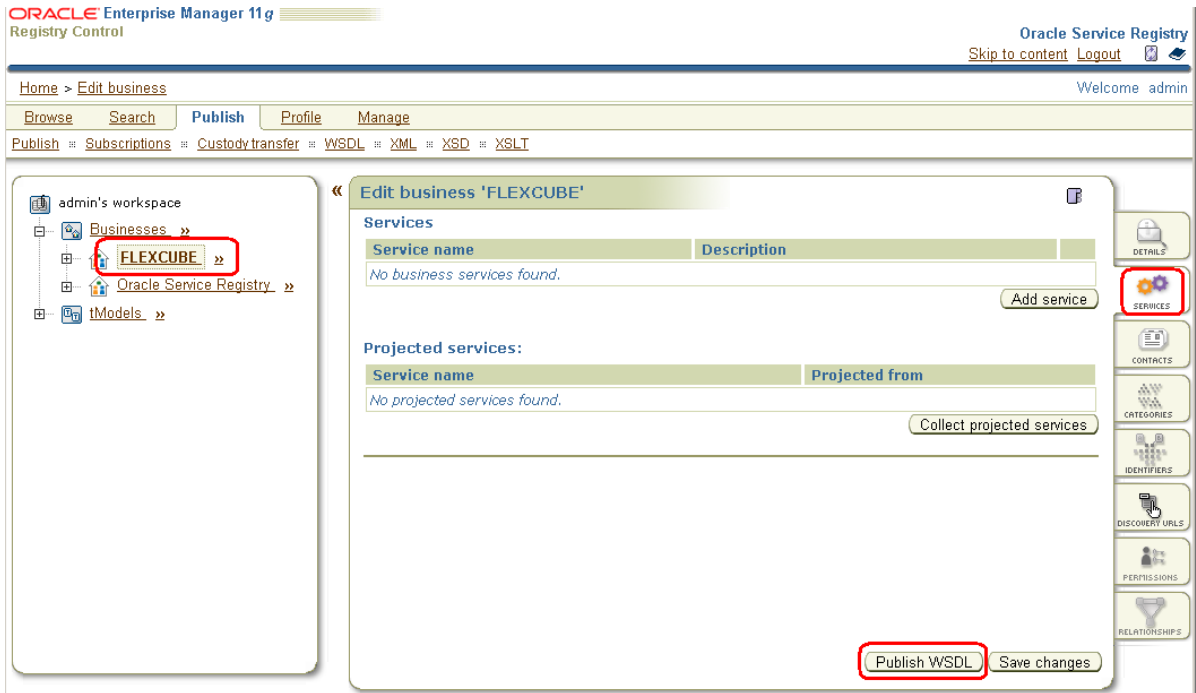
- On click of Publish, the following screen will be displayed where the user has to submit credentials i.e. username & password (username & password that was submitted during OSR Installation).

Login

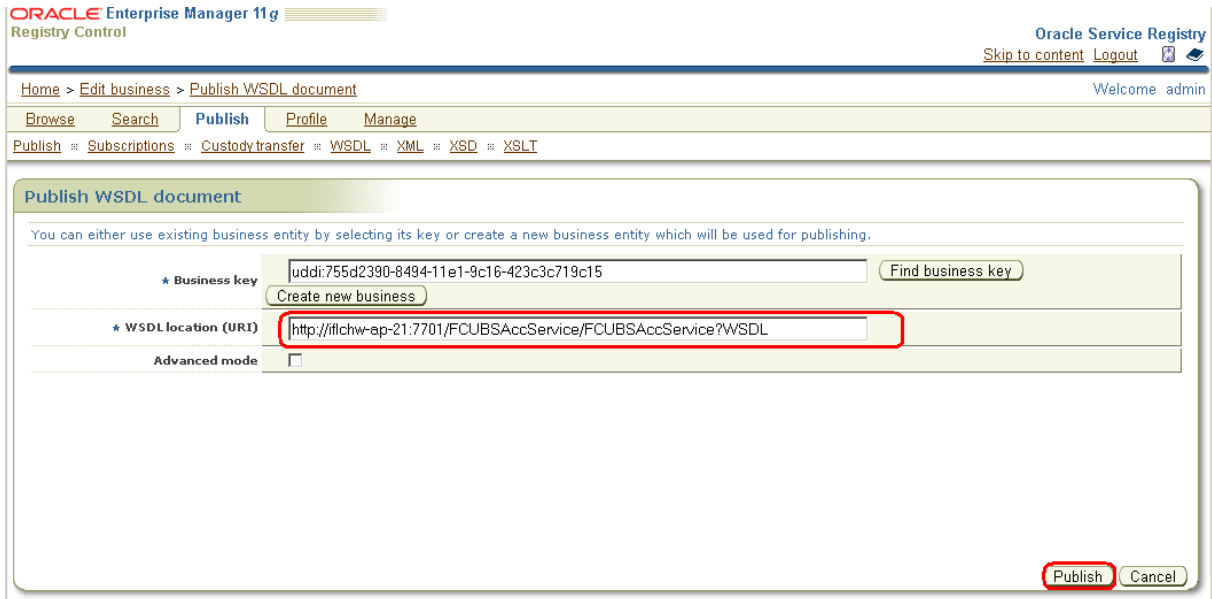
User name:

Password:

- On successful submission of credentials, the following page will be displayed, where you can find the Business that you have created on the left pane i.e. admin's workspace.
- In order to publish a WSDL you'll have to click the Publish WSDL button as shown below.



- On click of Publish WSDL button the following screen will be displayed where you will be asked to enter the WSDL location (URI) as shown below.



The WSDL (URI) looks something like this

<http://iflchw-ap-21:7701/FCUBSAccService/FCUBSAccService?WSDL> where

<Hostname> : iflchw-ap-21

<Port> : 7701

<Service Name>: FCUBSAccService

As you have already deployed the web services into the Application Server, in case you want to cross check for the WSDL (URI) you can copy paste the same link onto the Internet Explorer, but make sure that you change the <Hostname>: <Port> & <Service Name> accordingly. This link will generate an xml message on the browser.

8. Specify the same link for publishing the WSDL and click the Publish button in the Oracle Service Registry Tool. This completes the WSDL publishing & in turn web services.

ORACLE Enterprise Manager 11g
Registry Control

Oracle Service Registry
Skip to content Logout

Home > Edit business > Publish WSDL document

Welcome admin

Browse Search Publish Profile Manage

Publish :: Subscriptions :: Custody transfer :: WSDL :: XML :: XSD :: XSLT

Publishing summary

WSDL <http://fifchw-ap-21-7701/FCUBSAccService/FCUBSAccService?WSDL> has been successfully processed and the following entities have been published to the Oracle Registry:

WSDL service FCUBSAccService mapped to UDDI business service FCUBSAccService (uddi:8b59d040-8498-11e1-9c17-423c3c719c15)

WSDL ports have been mapped to UDDI binding templates:

Name	Binding key
FCUBSAccServiceSEI	uddi:8b636d30-8498-11e1-9c17-423c3c719c15

WSDL bindings have been mapped to UDDI tModels:

Name	Namespace	tModel
FCUBSAccServiceSEIBinding	http://types.ws.gw.fcubs.ofss.com	FCUBSAccServiceSEIBinding (uddi:8b3d4790-8498-11e1-9c17-423c3c719c15)

WSDL portTypes have been mapped to UDDI tModels:

Name	Namespace	tModel
FCUBSAccServiceSEI	http://types.ws.gw.fcubs.ofss.com	FCUBSAccServiceSEI (uddi:8b2579d0-8498-11e1-9c17-423c3c719c15)

Ok

7.3.2 Associate Classification

Once Taxonomy is created using Taxonomy Management, user can Associate classification to the services that have been published. First step to follow is to find your way to this particular page shown below i.e. Home > Publish.

ORACLE Enterprise Manager 11g
Registry Control

Oracle Service Registry
Skip to content Logout

Home > Edit service Welcome admin

Browse Search Publish Profile Manage

Publish Subscriptions Custody transfer WSDL XML XSD XSLT

admin's workspace

- Businesses »
- FLEXCUBE »
 - Contacts »
 - FCUBSAccService »**
 - Oracle Service Registry »
- tModels »

Edit service 'FCUBSAccService'

Categories

tModel key	Key name	KeyValue		
uddi-org:xml:namespace	uddi.org:xml:namespace	http://types.ws.gw.fcubs.ofss.com		
uddi-org:wsdl:types	uddi.org:wsdl:types	service		
uddi-org:xml:localName	uddi.org:xml:localName	FCUBSAccService		

Add category

Category groups

No group tModels found.

Save changes

DETAILS

BINDINGS

CATEGORIES

PERMISSIONS

- On this page you'll see Add Category on the right pane, Click it. Here choose the taxonomy that you have created by selecting the correct value from the drop down menu. Once the above step is completed all you have to do is check the particular category that you want to associate the web service & save the same as shown below.

Home > Edit service Welcome admin

Browse Search Publish Profile Manage

Publish Subscriptions Custody transfer WSDL XML XSD XSLT

admin's workspace

- Businesses »
- FLEXCUBE »
 - Contacts »
 - FCUBSAccService** »
- Oracle Service Registry »
- tModels »

Edit service 'FCUBSAccService'

Categories

tModel key	Key name	KeyValue		
uddi-org:xml:namespace	uddi.org:xml:namespace	http://types.ws.gw.fcubs.ofss.com		
uddi-org:wSDL:types	uddi.org:wSDL:types	service		
uddi-org:xml:localName	uddi.org:xml:localName	FCUBSAccService		

Category search: starts with

Taxonomy list

- FLEXCUBE Displaying categories 1 - 1 of 1
 - Financial (11)

Category groups

No group tModels found.

Home > Edit service Welcome admin

Browse Search Publish Profile Manage

Publish Subscriptions Custody transfer WSDL XML XSD XSLT

admin's workspace

- Businesses »
- FLEXCUBE »
 - Contacts »
 - FCUBSAccService** »
- Oracle Service Registry »
- tModels »

Edit service 'FCUBSAccService'

Categories

tModel key	Key name	KeyValue		
uddi-org:xml:namespace	uddi.org:xml:namespace	http://types.ws.gw.fcubs.ofss.com		
uddi-org:wSDL:types	uddi.org:wSDL:types	service		
uddi-org:xml:localName	uddi.org:xml:localName	FCUBSAccService		
FLEXCUBE	Financial	11		

Category groups

No group tModels found.

This completes Associating Classification to Web services.

7.3.3 Discovering Services

Based on Classification criteria, user can search for services. Oracle Service Registry returns all the services which meet the defined search criteria. For achieving this go to the particular page shown below i.e. Home>Browse. Here you can find the Taxonomy that you have created & click on any of the categories that has been maintained; on the right pane you can find the list of services that have been associated with the particular category.

The screenshot displays the Oracle Service Registry interface. At the top, it shows 'ORACLE Enterprise Manager 11g Registry Control' and 'Oracle Service Registry' with links for 'Skip to content', 'Logout', and a user icon. The breadcrumb path is 'Home > Browse taxonomy' and the user is logged in as 'admin'. A navigation menu includes 'Browse' (highlighted with a red box), 'Search', 'Publish', 'Profile', and 'Manage'. On the left, a 'favorite taxonomies' tree shows 'Taxonomy list' with a sub-item 'FLEXCUBE' containing 'Financial (11)' (highlighted with a red box). The main content area, titled 'Browse taxonomy', shows 'Categorized business services:' with 'Displaying results 1 - 1 of 1'. A table lists the service:

name	description
FCUBSAccService	wsdl:type representing service

At the bottom left, there are links for 'Browse | Filter | Query'.

8. Reference

1. <http://java.sun.com/developer/technicalArticles/WebServices/WSPack/>
2. <http://safari.oreilly.com/0321146182/ch19#X2ludGVybmFsX1NIY3Rpb25Db250ZW50P3htbGlkPTAzMjExNDYxODIvcGFydDA2>



Approach Document and Usage Guide
[December] [2016]
Version 12.3.0.0.0

Oracle Financial Services Software Limited
Oracle Park
Off Western Express Highway
Goregaon (East)
Mumbai, Maharashtra 400 063
India

Worldwide Inquiries:
Phone: +91 22 6718 3000
Fax: +91 22 6718 3001
www.oracle.com/financialservices/

Copyright © [2007], [2016], Oracle and/or its affiliates. All rights reserved.

Oracle and Java are registered trademarks of Oracle and/or its affiliates. Other names may be trademarks of their respective owners.

U.S. GOVERNMENT END USERS: Oracle programs, including any operating system, integrated software, any programs installed on the hardware, and/or documentation, delivered to U.S. Government end users are "commercial computer software" pursuant to the applicable Federal Acquisition Regulation and agency-specific supplemental regulations. As such, use, duplication, disclosure, modification, and adaptation of the programs, including any operating system, integrated software, any programs installed on the hardware, and/or documentation, shall be subject to license terms and license restrictions applicable to the programs. No other rights are granted to the U.S. Government.

This software or hardware is developed for general use in a variety of information management applications. It is not developed or intended for use in any inherently dangerous applications, including applications that may create a risk of personal injury. If you use this software or hardware in dangerous applications, then you shall be responsible to take all appropriate failsafe, backup, redundancy, and other measures to ensure its safe use. Oracle Corporation and its affiliates disclaim any liability for any damages caused by use of this software or hardware in dangerous applications.

This software and related documentation are provided under a license agreement containing restrictions on use and disclosure and are protected by intellectual property laws. Except as expressly permitted in your license agreement or allowed by law, you may not use, copy, reproduce, translate, broadcast, modify, license, transmit, distribute, exhibit, perform, publish or display any part, in any form, or by any means. Reverse engineering, disassembly, or decompilation of this software, unless required by law for interoperability, is prohibited.

The information contained herein is subject to change without notice and is not warranted to be error-free. If you find any errors, please report them to us in writing.

This software or hardware and documentation may provide access to or information on content, products and services from third parties. Oracle Corporation and its affiliates are not responsible for and expressly disclaim all warranties of any kind with respect to third-party content, products, and services. Oracle Corporation and its affiliates will not be responsible for any loss, costs, or damages incurred due to your access to or use of third-party content, products, or services.